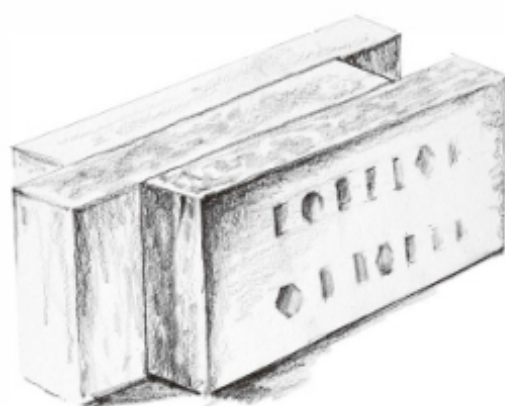




Clay Facing Brick



LOPO INTERNATIONAL LIMITED
ADD: TANGSHANG INDUSTRIAL DISTRICT OF
GUANQIAO, NANAN, FUJIAN, CHINA
PC: 362341

MP: +86 159 6081 0759

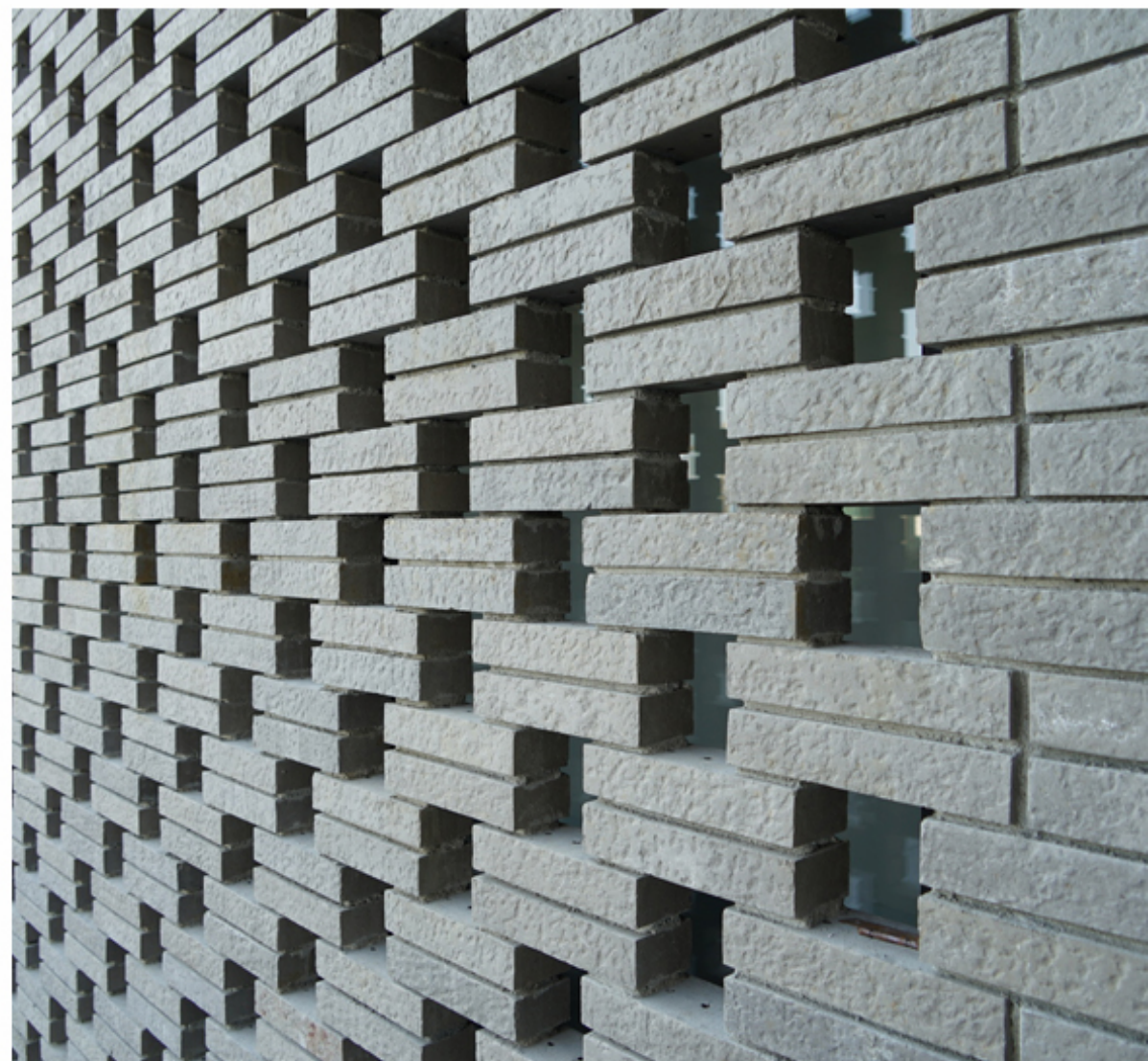
MP: +86 180 5927 5325

TEL: +86 592 5073 725

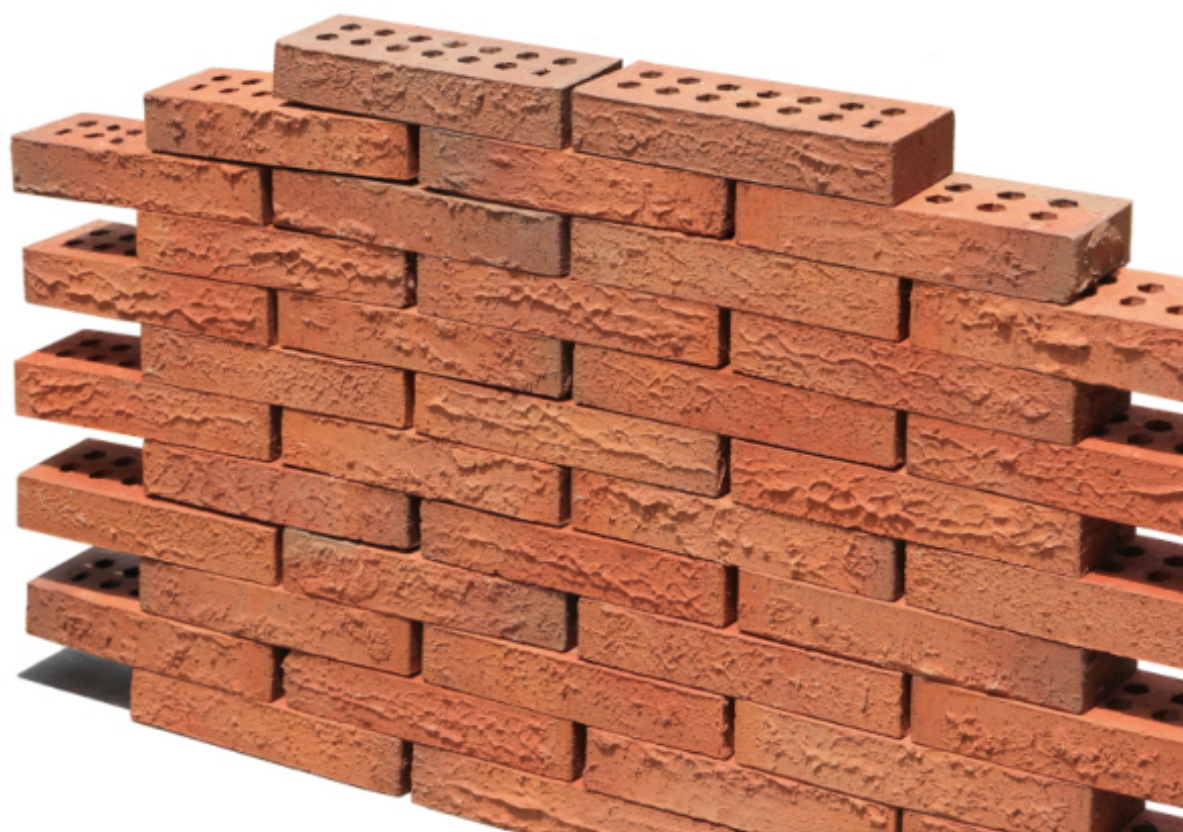
FAX: +86 592 6084 019

E-MAIL: lopo@lopochina.com

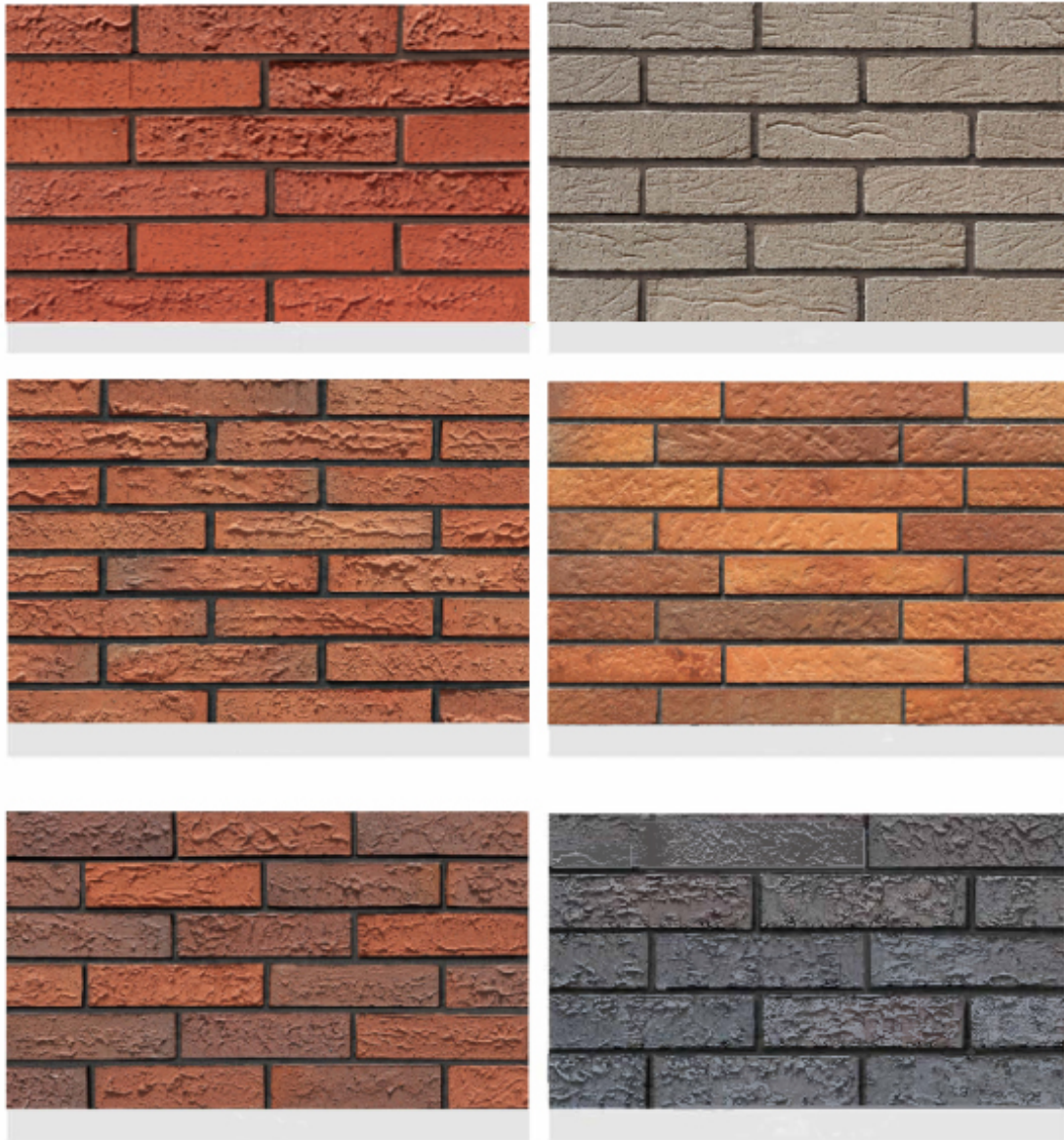
www.lopochina.com



In modern construction, facing bricks are more likely to be used as non-structural surface skinning. The facing bricks are fixed in the following method: through bricklaying, a brick wall with certain thickness is formed. Then, it connects with the main structure of the building by metal connecting pieces or pre-embedded steel bars and thus come as a whole. The facing bricks could be used as solid bricks or perforated bricks. The horizontal rebars and vertical rebars reinforce its structure, improve its ductility, ensure safety and stability, and possesses good anti-seismic performance.







Advantages of LOPO Facing Brick:

1. Low water absorption and good weather resistance.
Whether it is applied in regions with high temperature or extremely cold temperature, it is the best facade material.
2. It possesses good compressive strength, making it durable with low maintenance costs.
3. Good thermal insulation can save the building's energy consumption.
4. The high temperature (over 1000 degrees) firing makes it absolutely fireproof.
5. It features durable color and will never fade in the atmospheric environment.



Clay bricks, being the building materials with the longest history, have been demonstrating continuous dynamism and vitality in today's building and construction industry. Clay facade brick's unique features and wonderful design flexibility brings endless inspiration to the architects.

LOPO Custom-made Bricks for China Resources University

Sponsored by China Resources (Holdings) Co.,Ltd, China Resources University is a masterpiece of the world renowned architectural firm Foster + Partners. This university project has recently finished construction and commenced operation. As a masterpiece representing China's campus architecture design, this project highlights a unique design -- "slender red brick curtain wall".

Different from conventional bricks, the design team required that the red bricks must have roughness derived from natural materials, and varied surface patterns and tiered colors, in order to make the whole external wall more natural and charming. To produce the desired red bricks that meet the designers' requirement, LOPO technicians worked together with the Construction Department from China Resources (Holdings) Co.,Ltd in repetitive rounds of technical research, sample comparison, temperature control and testing. In terms of temperature control, LOPO conducted nearly 30 rounds of sample making, by firing the clay for 42-48 hours at a temperature ranging from 1200° to 1300°, with an increment of 10° for each round of sample making. Finally, LOPO attained 10 types of brick colors that can meet the designers' requirement for the brick's color gradation. In addition, to ensure the roughness of natural materials and the variousness of the surface patterns, LOPO adopted manual graining process that is very time consuming, so that the brick surface can have natural and random grains.





The wall bricks designed specifically for this project are all-new decorative bricks in China, and there are no relevant standards or predecessors. Therefore, LOPO constantly explored and innovated the production process. The bricks' dimensions are tailored. Flat bricks are 272.5x60x42mm, or 272.5x60x42mm, while the angular bricks have 5 types of dimensions according to the project design. Because these bricks are thick, it is difficult to air-dry. To solve this problem while maintaining the bricks' existing performance, LOPO technicians added a production step by cutting two circular grooves in the bricks for ventilation purpose.



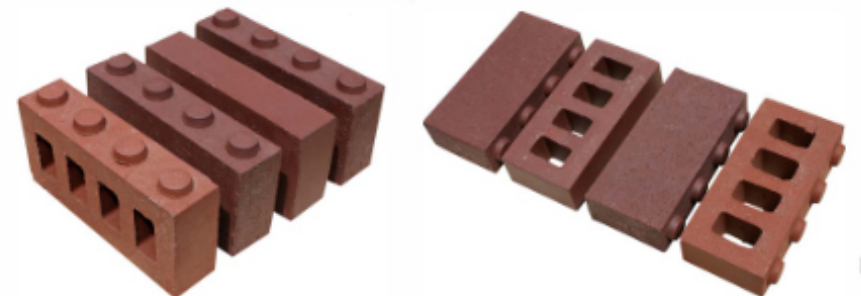
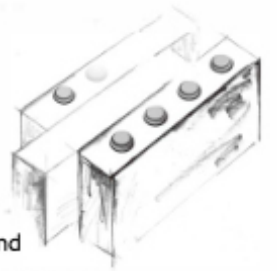


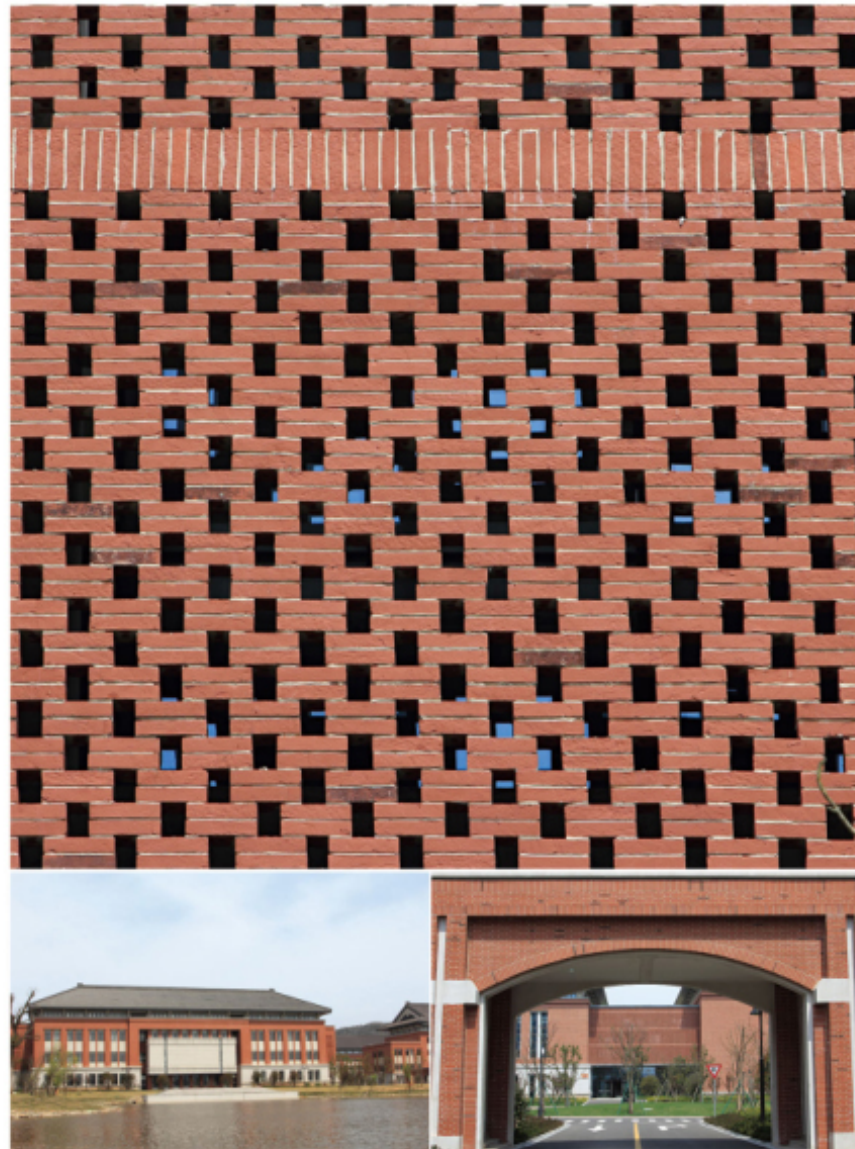
Project: Sanhe Yanjiao Jiadu Kindergarten
Building Area: 5000 square meters
Owner: Beijing Century Property Group
Architect: OBRA & CADG



Hamburg House of Germany (EXPO 2010 Shanghai)

Hamburg House is the first accredited passive house in China. Hamburg House basically does not require active supply of energy, but is instead powered by ground source heat pump for heating, cooling, ventilation and dehumidification, and can attain very low energy consumption through thermal-insulated and soundproof architectural exterior walls and sustainable energy.





Zhoushan Campus, Zhejiang University

The join of LOPO Clay Thin Tile let the whole campus filled with soft color, and back to nature. The whole campus adopted LOPO's classical handmade series WX634,FX634, without much decoration, the concave-convex of the surface perfectly reflects LOPO's arts and crafts. The products fired under high temperature, without any radioactivity, it's a clean, safe and ideal green product. At the mean while, the clay thin tile building can self-adjust the temperature and create a "green campus" ecological and cultural environment.

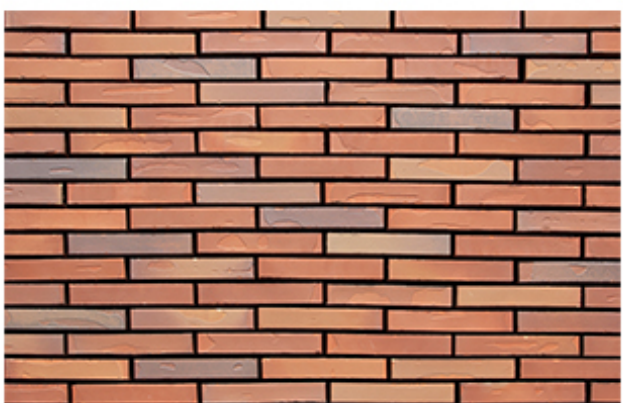
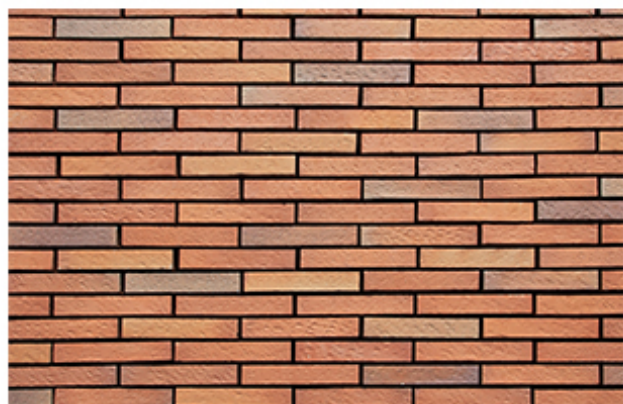
Project Name: Renovation of Flying Tigers Memorial
 Project Location: Zhijiang County, Hunan Province, China
 Gross Area: 2209 square meters
 Designed by: Hunan Architectural Design Institute
 Chief Architect: Yang Ying
 LOPO Type: FX996



In order to better meet the architects' requirement for the visual weight of historical buildings, LOPO customized terracotta curtainbricks with the dimension of W120 * L240 * T53mm. These bricks are all solid and their surfaces are hand-made showing a very natural texture, with no two identical bricks; they were purposefully made antique-finished in the color, so that a sense of antique-ness radiates from the black-grey wall bricks. The customized ceramic bricks not only add massiness to the project, but can also coexist with the original architecture harmoniously.



As a professional manufacturer of terracotta exterior facade materials for nearly 2 decades, LOPO is committed to producing high-quality, high-end terracotta facing bricks. Our facing bricks are available in a wide range of colors, ranging from red, white, grey, yellow and brown to metallic color or even carbon black. In terms of the surface texture, we provide natural smooth surface, frosted surface, rough surface and other conventional surface, as well as a variety of customized handmade surfaces.



As for the shape, both facing bricks of different length and width proportions, and special long facing bricks are available. The rich color, shape and surface texture combined with different masonry techniques and mortar colors offers numerous possibilities for the styling of the building facade.